



Main Distribution Frame

	HVt 71	HVt 91M	HVt COM 91-2	HVt COM B2-2	HVt COM 80-2	HVt COM 80-1
MDF	for system 71	for LSA-PROFIL				for LSA-PLUS
Exchange type	analog and digital exchange	computer-controlled exchanges and switchboards	computer-controlled exchanges and switchboards	computer-controlled exchanges	analog and digital exchanges	analog and digital exchanges
Exchange size	big and middle exchanges	middle and small exchanges	middle and small exchanges	big and middle exchanges	big and middle exchanges	big and middle exchanges
HVt allocation						
System side	vertical	vertical	vertical	vertical	horizontal	horizontal
Line side	vertical	vertical in 1 bay among themselves	vertical in 1 bay among themselves	vertical in 1 bay next to each other	vertical	vertical
Jumpering direction						
Prefered direction	long jumpering	jumpering	jumpering within 1 bay vertical	short jumpering within 1 bay vertical	long jumpering within 1 bay horizontal	long jumpering
Jumperwire length (typ.)	3 m	1.5 m	1.5 m	0.2 m	3 m	3 m
Jumper times	100 %	70 %	70 %	50 %	100 %	100 %
Capacity						
System side	pairs : pairs 480 : 600	pairs : pairs 512 : 600	pairs : pairs 512 : 600	pairs : pairs 512 : 600	pairs : pairs 576 : 600	pairs : pairs 576 : 600
Line side	(1 : 1.25)	(1 : 1.17)	(1 : 1.17)	(1 : 1.17)	(1 : 1.04)	(1 : 1.04)
Density (pairs/m ²)	1915	1454	1454	2644	1454	1454
Space requirement	100 %	85 %	75 %	40 %	75 %	65 %
Frame						
Type	vertical/ horizontal	vertical	vertical	vertical	vertical horizontal	vertical horizontal
Depth*)	1,04 m	2 x 0,34 m	2 x 0,29 m (ETSI conform)	2 x 0,27 m (ETSI conform)	0,58 m	0,49 m
Assembly	not assembled	assembled	part assembled	part assembled	part assembled	part assembled
Installation times	100 %	25 %	50 %	40 %	60 %	60 %
Overvoltage protection	Magazine	Magazine or single plugs	Magazine or single plugs	Magazine or single plugs	Magazine or single plugs	Magazine or single plugs
(Position)	(backside)	(frontside)	(frontside)	(frontside)	(frontside)	(frontside)



Main Distribution Frame HVt-91-M

Order No.	Wall mounted frame, 2 bays	QTY
6577 1 080-01	HVt-91-M, 2-bays	1 pc
6577 1 019-00	HVt-91-M-Jumper row	1 pc
6577 2 800-00	HVt-91-M-End piece, right-hand side	1 pc
6577 2 801-00	HVt-91-M-End piece, left-hand side	1 pc

Order No.	Free-standing, 2 bays, single-sided	QTY
6577 1 080-01	HVt-91-M, 2-bays	1 pc
6577 1 019-00	HVt-91-M Jumper row	1 pc
6577 2 800-00	HVt-91-M-End piece, right-hand side	1 pc
6577 2 801-00	HVt-91-M-End piece, left-hand side	1 pc
6577 2 808-00	HVt-91-M-Ceiling fixing rail	1 pc
6577 2 864-00	HVt-91-M-Connecting piece	2 pcs

Order No.	Free-standing, 2 bays, double-sided	QTY
6577 1 080-01	HVt-91-M, 2-bays	2 pcs
6577 1 019-00	HVt-91-M Jumper row	2 pcs
6577 2 800-00	HVt-91-M End piece, right-hand side	2 pcs
6577 2 801-00	HVt-91-M-End piece, left-hand side	2 pcs
6577 2 802-00	HVt-91-M-Accessories	1 pc
6577 2 857-00	HVt-91-M-Wire guide BS	6 -9 pcs

Technical Data:

Connection capacity: 2 x 600 pairs (line & system)

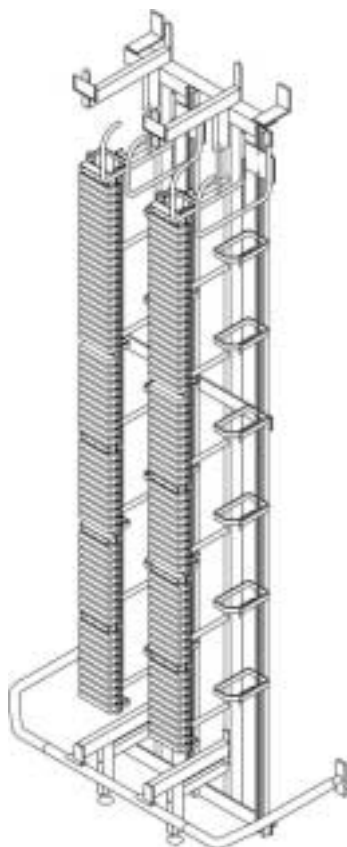
Distribution frames can be combined to form banks of any length (note the maximum capacity of the horizontal jumpering guides is 4000 pairs)

Jumpering capacity: 4000 pairs horizontal jumper guides
600 pairs vertical jumper guides

Variants: Free-standing single- or double-sided, secured to the wall or ceiling.
2-bays, for LSA-PROFIL 2/10 or 2/8.

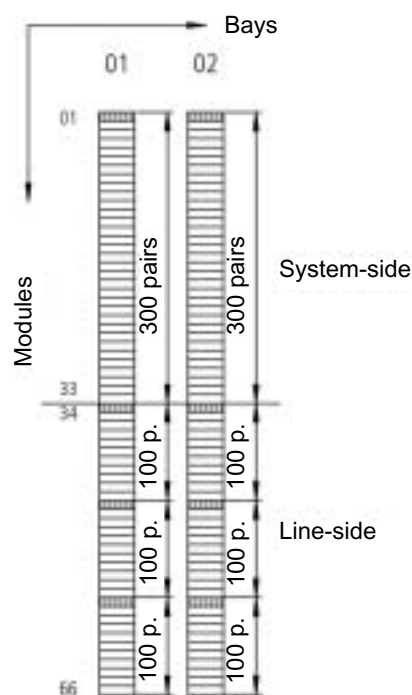
Dimensions:

Height: 2500 mm - 3320 mm
Width: 904 mm
Depth: 389 mm / 700 mm
(single- / double-sided)



Typical equipment configuration

Preferably connect the lines to the bottom part of the main distribution frame (connection block with 100 pairs) and the system lines to the top part of the frame (connection block with 300 pairs).



LSA-PROFIL® Main Distribution Frame

Main Distribution
Frame



11.1

AccessNET

Main Distribution Frame HVt-COM-91-2 for LSA-PROFIL®

Order No.	Wall mounted frame, 2 bays	QTY
6971 1 023-00	HVt-COM-91-2, 2-bays	1 pc
6971 2 220-00	HVt-Kick-bar kit, for 2-bays	1 pc
6971 2 228-00	HVt-Kick-bar termination kit	1 pc
6971 2 202-00	HVt-Frame termination kit	1 pc

Order No.	Free-standing, 2 bays, single-sided	QTY
6971 1 023-00	HVt-COM-91-2, 2-bays	1 pc
6971 2 263-00	HVt Ceiling fixing rail, 2-bays	1 pc
6971 2 220-00	HVt-Kick-bar kit, 2-bays	1 pc
6971 2 228-00	HVt-Kick-bar termination kit	1 pc
6971 2 202-00	HVt-Frame termination kit	1 pc

Order No.	Free-standing, 2 bays, double-sided	QTY
6971 1 023-00	HVt-COM-91-2, 2-bays	2 pcs
6971 2 420-00	HVt Back-to-back bolt fastening	1 pc
6971 2 263-00	HVt Ceiling fixing rail, 2-bays	1 pc
6971 2 220-00	HVt Kick-bar kit, for 2-bays	2 pcs
6971 2 228-00	HVt Kick-bar termination kit	2 pcs
6971 2 202-00	HVt Frame termination kit	2 pcs

Technical Data:

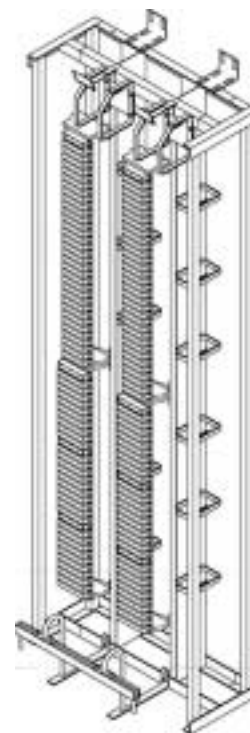
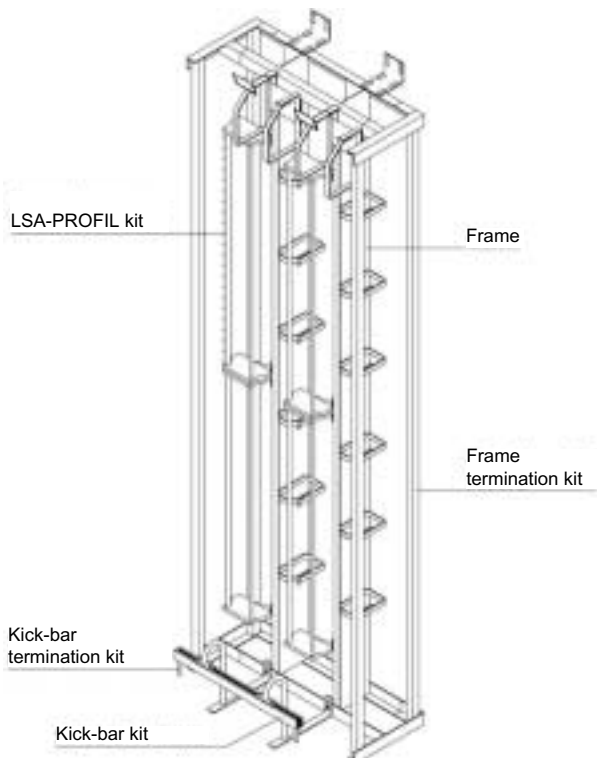
Connection capacity: 2 x 600 pairs (line & system)

Distribution frames can be combined to form banks of any length (note the maximum capacity of the horizontal jumpering guides is 3200 pairs)

Jumpering capacity: 3200 pairs horizontal jumper guides
1300 pairs vertical jumper guides

Variants: Free-standing single- or double-sided, secured to the wall or ceiling.
2-bays, for LSA-PROFIL 2/10 or 2/8.

Dimensions: Height: 2400 mm - 3220 mm
Width: 700 mm
Depth: 479 mm / 875 mm
(single- / double-sided)





Main Distribution Frame HVt-COM-B2-2 for LSA-PROFIL®-2/10 (System) and 2/8 (Lines)

Order No.	Wall mounted frame, 2 bays	QTY
6971 1 020-00	HVt-COM-B2-2, 2-bays	1 pc
6971 2 220-00	HVt-Kick-bar kit, for 2-bays	1 pc
6971 2 228-00	HVt-Kick-bar termination kit	1 pc
6971 2 202-00	HVt-Frame termination kit	1 pc

Order No.	Wall mounted frame, 3 bays	QTY
6971 1 021-00	HVt-COM-B2-2, 3-bays	1 pc
6971 2 221-00	HVt-Kick-bar kit, for 3-bays	1 pc
6971 2 228-00	HVt-Kick-bar termination kit	1 pc
6971 2 202-00	HVt-Frame termination kit	1 pc

Order No.	Wall mounted frame, 5 bays	QTY
6971 1 022-00	HVt-COM-B2-2, 5-bays	1 pc
6971 2 222-00	HVt-Kick-bar kit, for 5-bays	1 pc
6971 2 228-00	HVt-Kick-bar termination kit	1 pc
6971 2 202-00	HVt-Frame termination kit	1 pc

Order No.	Free-standing, 2 bays	QTY
6971 1 020-00	HVt-COM-B2-2, 2-bays	1 pc
6971 2 260-00	HVt Ceiling fixing rail, 2-bays	1 pc
6971 2 220-00	HVt-Kick-bar kit, for 2-bays	1 pc
6971 2 228-00	HVt-Kick-bar termination kit	1 pc
6971 2 202-00	HVt-Frame termination kit	1 pc

Order No.	Free-standing, 3 bays	QTY
6971 1 021-00	HVt-COM-B2-2, 3-bays	1 pc
6971 2 261-00	HVt Ceiling fixing rail, 3-bays	1 pc
6971 2 221-00	HVt-Kick-bar kit, for 3-bays	1 pc
6971 2 228-00	HVt-Kick-bar termination kit	1 pc
6971 2 202-00	HVt-Frame termination kit	1 pc

Order No.	Free-standing, 5 bays	QTY
6971 1 022-00	HVt-COM-B2-2, 5-bays	1 pc
6971 2 262-00	HVt Ceiling fixing rail, 5-bays	1 pc
6971 2 222-00	HVt Kick-bar kit, for 5-bays	1 pc
6971 2 228-00	HVt Kick-bar termination kit	1 pc
6971 2 202-00	HVt Frame termination kit	1 pc

Technical Data:

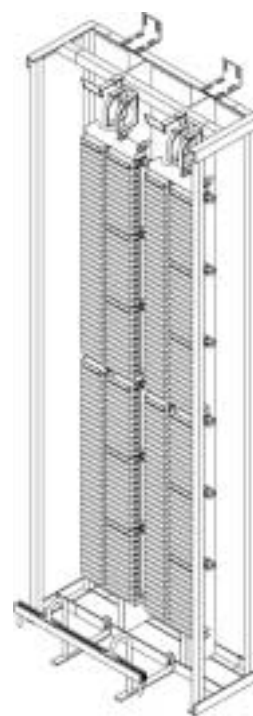
Connection capacity: 600 pairs per bay (line), 512 pairs (system)
Distribution frames can be combined to form banks of any length (note the maximum capacity of the horizontal jumpering guides is 1200 pairs)

Jumpering capacity: 1200 pairs horizontal jumper guides

150 pairs vertical jumper guides

Variants: Free-standing single- or double-sided, secured to the wall or ceiling.
2-, 3- or 5-bays, for LSA-PROFIL 2/10 or 2/8.

Dimensions: Height: 2400 mm - 3220 mm
Width: 750 mm / 1025 mm / 1575 mm
(2-bays / 3-bays / 5-bays)
Depth: 479 mm / 875 mm
(1 single- / 2 double-sided)



Order No.	Free-standing, 2 bays, double sided	QTY
6971 1 020-00	HVt-COM-B2-2, 2-bays	2 pcs
6971 2 420-00	HVt Back-to-back bolt fastening	2 pcs
6971 2 412-10	HVt Jumper guide for through-jumpering	1 pc
6971 2 260-00	HVt Ceiling fixing rail, 2-bays	1 pc
6971 2 220-00	HVt Kick-bar kit, for 2-bays	2 pcs
6971 2 228-00	HVt Kick-bar termination kit	2 pcs
6971 2 202-00	HVt Frame termination kit	2 pcs

Order No.	Free-standing, 3 bays, double-sided	QTY
6971 1 021-00	HVt-COM-B2-2, 3-bays	2 pcs
6971 2 420-00	HVt Back-to-back bolt fastening	3 pcs
6971 2 412-10	HVt Jumper guide for through-jumpering	1 pc
6971 2 261-00	HVt-Ceiling fixing rail, 3-bays	1 pc
6971 2 221-00	HVt-Kick-bar kit, for 3-bays	2 pcs
6971 2 228-00	HVt-Kick-bar termination kit	2 pcs
6971 2 202-00	HVt-Frame termination kit	2 pcs

Order No.	Free-standing, 5 bays, double-sided	QTY
6971 1 022-00	HVt-COM-B2-2, 5-bays	2 pcs
6971 2 420-00	HVt Back-to-back bolt fastening	5 pcs
6971 2 412-10	HVt Jumper guide for through-jumpering	1 pc
6971 2 262-00	HVt-Ceiling fixing rail, 5-bays	1 pc
6971 2 222-00	HVt-Kick-bar kit, for 5-bays	2 pcs
6971 2 228-00	HVt-Kick-bar termination kit	2 pcs
6971 2 202-00	HVt-Frame termination kit	2 pcs

LSA-PROFIL® Main Distribution Frame

Main Distribution
Frame



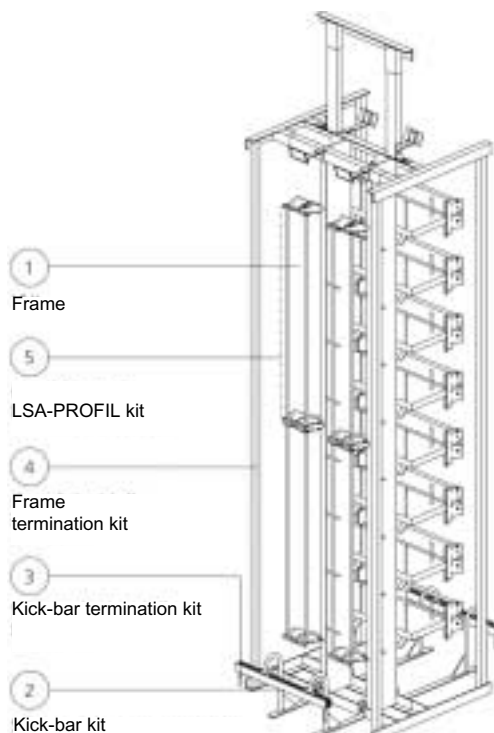
11.1

AccessNET

Main Distribution Frame HVt-COM-80-2 for LSA-PROFIL®

Order No.	Free-standing, 2 bays	QTY
6971 1 024-00	HVt-COM-80-2, 2-bays	1 pc
6971 2 224-00	HVt-Kick-bar kit, for 2-bays	1 pc
6971 2 228-00	HVt-Kick-bar termination kit	2 pcs
6971 2 203-00	HVt-End piece kit	1 pc

Order No.	Free-standing, 4 bays	QTY
6971 1 025-00	HVt-COM-80-2, 4-bays	1 pc
6971 2 225-00	HVt Kick-bar kit, for 4-bays	1 pc
6971 2 228-00	HVt Kick-bar termination kit	2 pcs
6971 2 203-00	HVt End piece kit	1 pc



Technical Data:

Connection capacity:

2-bays System side: 1280 pairs (LSA-PROFIL 2/10) and 1024 pairs (LSA-PROFIL 2/8) with installed fixed profile frames
Line side: 1200 pairs

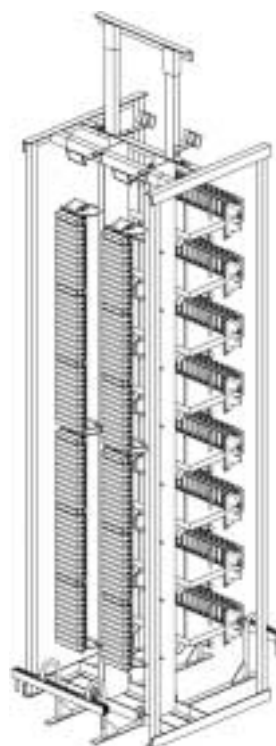
4-bays System side: 2560 pairs (LSA-PROFIL 2/10) and 2048 pairs (LSA-PROFIL 2/8) with installed fixed profile frames
Line side: 2400 pairs
 Distribution frames can be combined to form banks of any length (note the maximum capacity of the horizontal jumpering guides)

Jumpering capacity: 12000 pairs horizontal jumper guides

Variants: Free standing single- or double-sided, secured to the wall or ceiling.
 2- or 4-bays, for LSA-PROFIL 2/10 or 2/8.

Dimensions:

Height:	2400 mm - 3220 mm
Width:	650 mm (2-bays)
	1100 mm (4-bays)
Depth:	875 mm

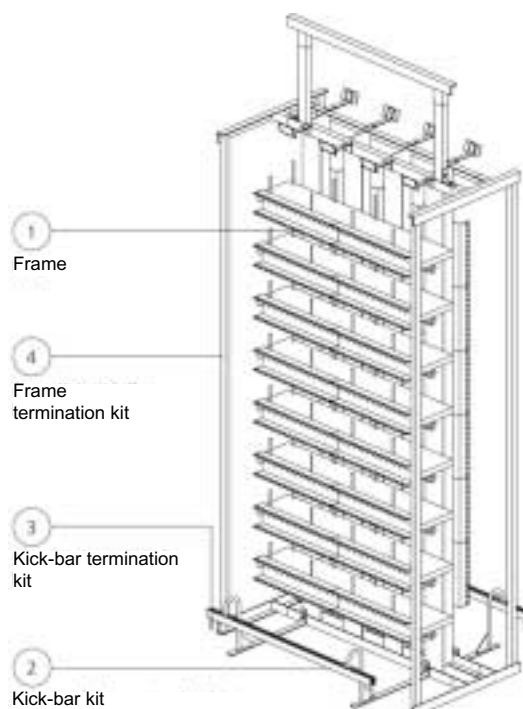




Main Distribution Frame HVt-COM-80-1 for LSA-PLUS®

Order No.	Free-standing, 2 bays	QTY
6971 1 040-00	HVt-COM-80-1, 2-bays	1 pc
6971 2 224-00	HVt-Kick-bar kit, for 2-bays	2 pcs
6971 2 228-00	HVt-Kick-bar termination kit	2 pcs
6971 2 203-00	HVt-End piece kit	2 pcs

Order No.	Free-standing, 4 bays	QTY
6971 1 041-00	HVt-COM-80-1, 4-bays	1 pc
6971 2 225-00	HVt Kick-bar kit, for 4-bays	2 pcs
6971 2 228-00	HVt Kick-bar termination kit	2 pcs
6971 2 203-00	HVt End piece kit	2 pcs



Technical Data:

Connection capacity:

2-bays **System side:** 1024 pairs (LSA-PLUS 2/8)
 Line side: 1200 pairs (LSA-PLUS 2/10)

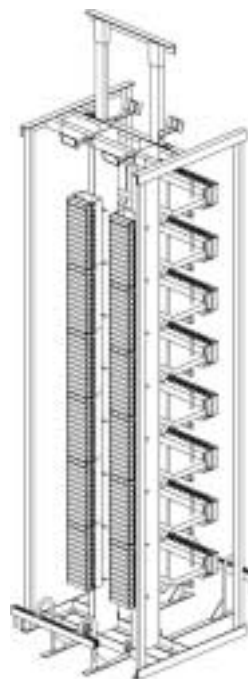
4-bays **System side:** 2048 pairs (LSA-PLUS 2/8)
 Line side: 2400 pairs (LSA-PLUS 2/10)

Distribution frames can be combined to form banks of any length (note the maximum capacity of the horizontal jumpering guides)

Jumpering capacity: 12000 pairs horizontal jumper guides

Variants: Free-standing single- or double-sided, secured to the wall or ceiling.
 2- or 4-bays, for LSA-PLUS 2/10 or 2/8.

Dimensions: Height: 2400 mm - 3220 mm
 Width: 650 mm (2-bays)
 1100 mm (4-bays)
 Depth: 875 mm



LSA-PROFIL® Wall Distribution Frame

Main Distribution
Frame



11.3

AccessNET

LSA-PROFIL®-Wall Distribution Frame

Order No.	LSA-PROFIL Wall Distribution Frame	Pack
9101 1 010-00	LSA-PROFIL Wall distribution frame Basic kit	1 pc
9101 1 011-00	LSA-PROFIL Wall distribution frame Extension kit	1 pc

The LSA-PROFIL wall mounted distributor rack kit is a unit for quick wall mounting or mounting in 19" systems. Up to 3 PROFIL bays can be mounted on the 500mm long C rails. Each PROFIL bay consists of two round rods (800mm long) and 2 LSA-PROFIL rods 95, as well as jumper guides which are mounted on the upper and lower C rails. Each bay can accommodate up to 32 LSA PROFIL modules, which means that a 3-bay distributor can accommodate up to 960 pairs (gross). Banks of distributor racks can be set up, but should however be limited to two basic kits (observe jumpering volume!).

Two kits are available:

- Basic kit
- Extension kit

With the exception of the two 500mm long C profile rails in the basic kit, the two kits contain the same components and the same number of pieces per component.

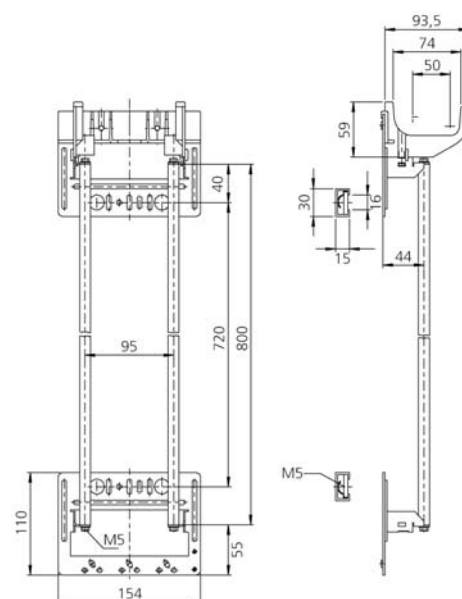
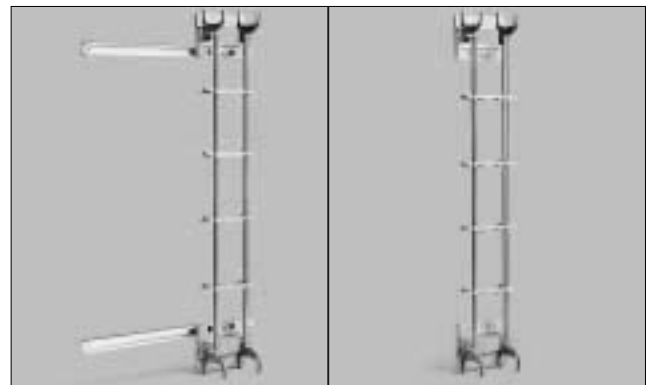
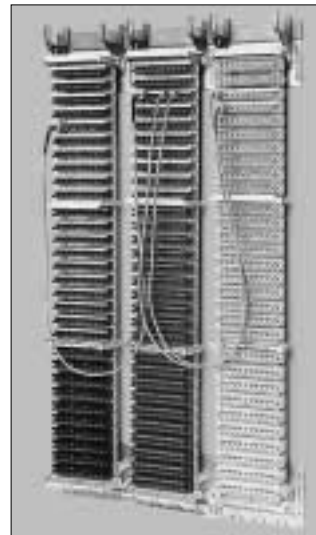
The kits consist of (Order Nos. are mentioned only for easier ordering of spare parts for the distributon kits):

Designation	Order No.	QTY per	
		Basic kit	Extension kit
C-rail 500 mm	9101 3 004-00	2	0
M5 captive nut	9101 3 035-00	2	2
LSA-PROFIL mounting plate 95	6619 3 020-00	2	2
Profile 12 x 800 mm	6619 3 308-00	2	2
Cable guide-double-sided	6619 3 031-00	2	2
Jumpering guide-double-sided	6619 3 034-00	4	4
Mounting instruction	on request	1	1

Dimensions:

Width:

- Basic kit (c-rails) 500 mm
- bay 154 mm
- additional module height - LSA-PROFIL series 2 (from center of the profile rods)
 - without overvoltage protection 37 mm
 - with overvoltage protection 63 mm





LSA-PLUS® Wall Distribution Frame

Order No.	LSA-PLUS Wall DistributionFrame	Pack
6044 1 011-00	LSA-PLUS Wall Distribution Frame Basic kit	1 pc

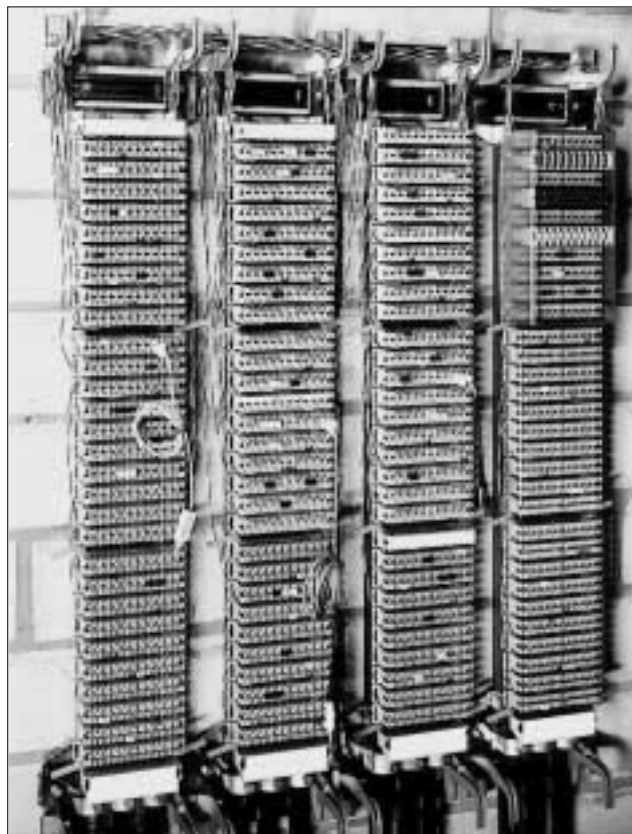
The LSA-PLUS wall mounted distributor is a quick mounting rack which can accommodate up to 4 self-supporting backmount frames. Depending on the purpose of the distributor, the backmount frames can be equipped with connection or disconnection modules from the LSA-PLUS Series 2 range. Distributors can be set up with series 2/10 LSA-PLUS modules. Each kit has a distribution capacity of up to 2000 pairs. Kits should not be arranged in rows (jumping volume should be observed!).

Dimensions:

Total width: $4 \times 174\text{mm} = 696\text{mm}$
Fixing width: $609 \pm 3\text{mm}$

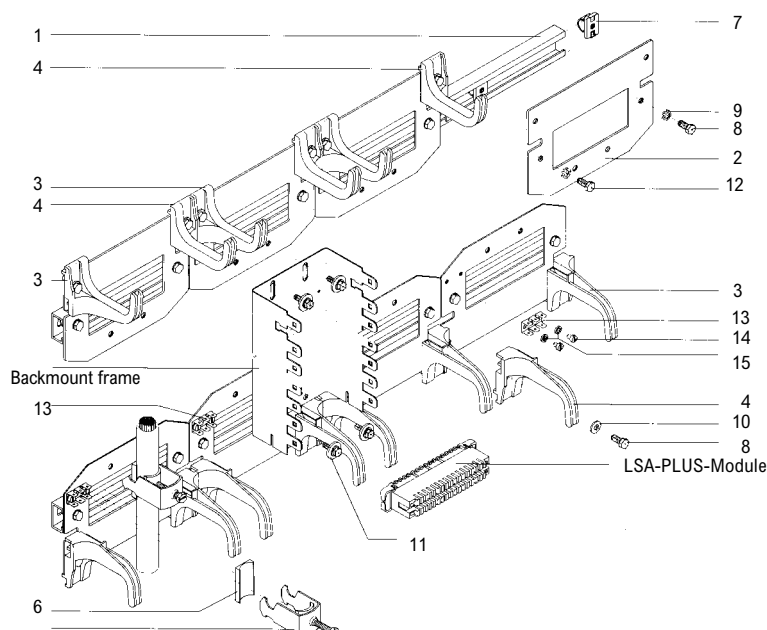
Total depth: $18 + T (50) + t (35-75) \text{ mm} = \text{min. } 103-143\text{mm}$
T = depth of backmount frame (without teeth)
t = mounting depth of the LSA-PLUS modules 35mm
– with overvoltage protection inserted 61mm
– with cord terminal inserted 75mm

Total height:	used LSA-Backmount frame	Total height mm
LSA-Backmount frame (see 11-Page 10)	$n \times (10+1) \text{ modules}$	$234 + n \times 233$
LSA-Backmount frame (see 1-Page 18)	$M = 1 \text{ up to } 50 \text{ modules}$	$222 + (M - 1) \times R$



LSA-PLUS modules, insertion tool and other accessories are to be ordered separately

	Pieces
1 C-rail	2
2 Mounting plate	8
3 Cable guide*)	8
4 Cable guide*)	8
5 "C"-clamp*)	8
6 Backing plate*)	8
7 Sliding nut M6	16
8 Hexagonal head bolt M6x12	16
9 Fan-type lock washer A6,4	16
10 Washer A6,4	16
11 Screw with washer assembly M5x16	16
12 Hexagonal head bolt M6x16	16
13 Flat terminal	4
14 Cheese head screw M4x6	8
15 Toothed washer I4,6	8
16 Plate	16



LSA-PLUS® Wall Distribution Frame

Main Distribution
Frame



11.4

AccessNET

LSA-PLUS®-Wall Distribution Frame - Aecessorioies

Order No.	LSA Wall Distribution Frame	Pack
5267 3 585-00	LSA Backmount frame 2/10 for 1 x 10+1 Module 2/10	1 pc
5267 3 585-01	LSA Backmount frame 2/10 for 2 x 10+1 Module 2/10	1 pc
5267 3 585-02	LSA Backmount frame 2/10 for 3 x 10+1 Module 2/10	1 pc
5267 3 585-03	LSA Backmount frame 2/10 for 4 x 10+1 Module 2/10	1 pc

For 10 LSA-PLUS modules 2/10 with additional position for one additional LSA-PLUS module 2/10, or one Module Label holder 2/10, or one LSA-PLUS Earth module 2/38. Cable supply from inside the LSA Backmount frame. For indoor usage mounted in wall distribution frames and free-standing distribution frames or for outdoor distribution boxes, cross connection cabinets.

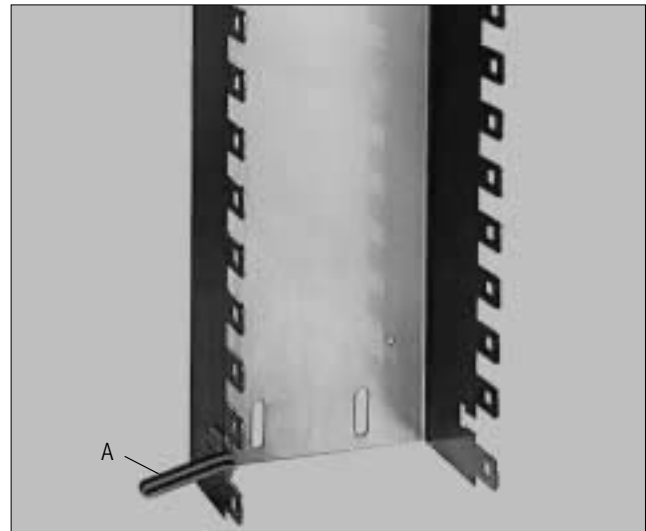
Dimensions: T=50 mm (depth of cable space), R=22,5 mm (Pitch),
R1=30 mm (Pitch of additional position)

Modules	L (length)	fixing width
1 x 10+1	263.0 mm	240.0 mm
2 x 10+1	495.5 mm	472.5 mm
3 x 10+1	728.0 mm	705.0 mm
4 x 10+1	960.5 mm	937.5 mm

Material: stainless steel X 5 CrNi 1810n, untreated

5267 3 589-00	Jumper Guide	1 pc
---------------	--------------	------

See detail A in figure.



Order No.	LSA Mounting adapter	Pack
6455 3 027-00	LSA Mounting adapter	1 pc

System component for fixing up variable wall distribution frames or frames built in distribution cabinets. Suitable for backmount frames series 2/8 and 2/10. The smallest distributor unit consists of one backmount frame fixed between two LSA mounting adapters equipped with LSA-PLUS modules, or two LSA-PROFIL rods fixed between two LSA mounting adapters equipped with LSA-PROFIL modules.

A clip-on system in the adapters enables further units to be added horizontally and/or vertically as required.

The installation aids needed in distributors are integrated into the adapter:

- 3 cable fixing points,
- 2 switching wire guides,
- 2 mounting holes for vertical or horizontal wall mounting or isolated fixing of backmount frames in cabinets

R=Pitch (22.5mm or 25mm)

M=Modules

L=Fixing length

