

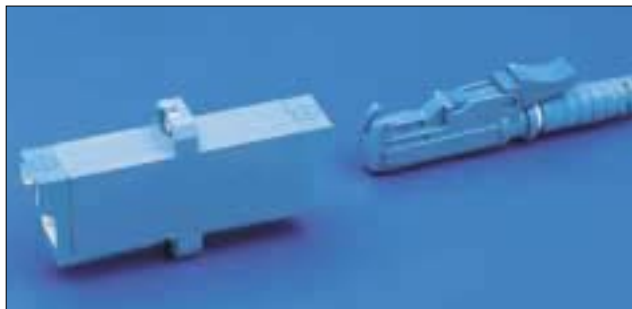


# FO Through Adapters

## FO Through Adapters

Order No.	FO Through adapter E2000	Pack
6824 2 300-18	FO Through adapter E2000/PC, SM, colour: blue	1 pc
6824 2 300-20	FO Through adapter E2000/APC, SM, colour: green	1 pc

Adapter housing made of plastic with ceramic sleeve. Can be fitted in a housing wall either with 2 M2 screws (for wall thickness of up to 12mm) or with the snap-in clip (for wall thickness of up to 1.8mm) on the housing of the adapter.



Order No.	FO Through-adapter ST	Pack
6824 2 300-08	FO Through-adapter ST, MM	1 pc

Adapter housing made of brass, with a phosphor-bronze sleeve. Can be fitted in a housing wall with a coupling ring.



Order No.	FO Through-adapter FC	Pack
6824 2 300-04	FO Through-adapter FC/PC,SF,MM	1 pc
6824 2 300-06	FO Through-adapter FC/APC,SF,SM	1 pc
6824 2 300-12	FO Through-adapter FC/PC,RF,MM	1 pc
6824 2 300-47	FO Through-adapter FC/APC,RF,SM	1 pc

Adapter housing made of brass (nickel plated) with ceramic sleeve. Can be fitted in a housing wall either with 2 M2 screws for the SF version (for wall thickness of up to 2mm) or with a coupling ring for the RF version (for wall thickness of up to 2mm).



Order No.	FO Through-adapter SC	Pack
6824 2 300-00	FO Through-adapter SC/PC, SM colour: blue	1 pc
6824 2 300-02	FO Through-adapter SC/APC, SM colour: green	1 pc

Adapter housing made of plastic with ceramic sleeve. Can be fitted in a housing wall either with 2 M2 screws (for wall thickness of up to 12mm) or with the snap-in clip (for wall thickness of up to 1.8mm) on the housing of the adapter.



Order No.	FO Through-adapter SC/PC	Pack
6824 2 215-00	FO Through-adapter SC/PC, MM colour: beige	1 pc

FO through-adapter for SC-MM multi-mode connectors. The through-adapter housing is made of plastic with a phosphor bronze sleeve.



## F0 Through Adapters

Order No.	FO Through adapter SC/SPC	Pack
6824 2 300-10	FO Through adapter SC/PC duplex, MM colour: beige	1 pc

FO through-adapter for SC-MM connectors. Adapter housing made of plastic with phosphor bronze sleeve.

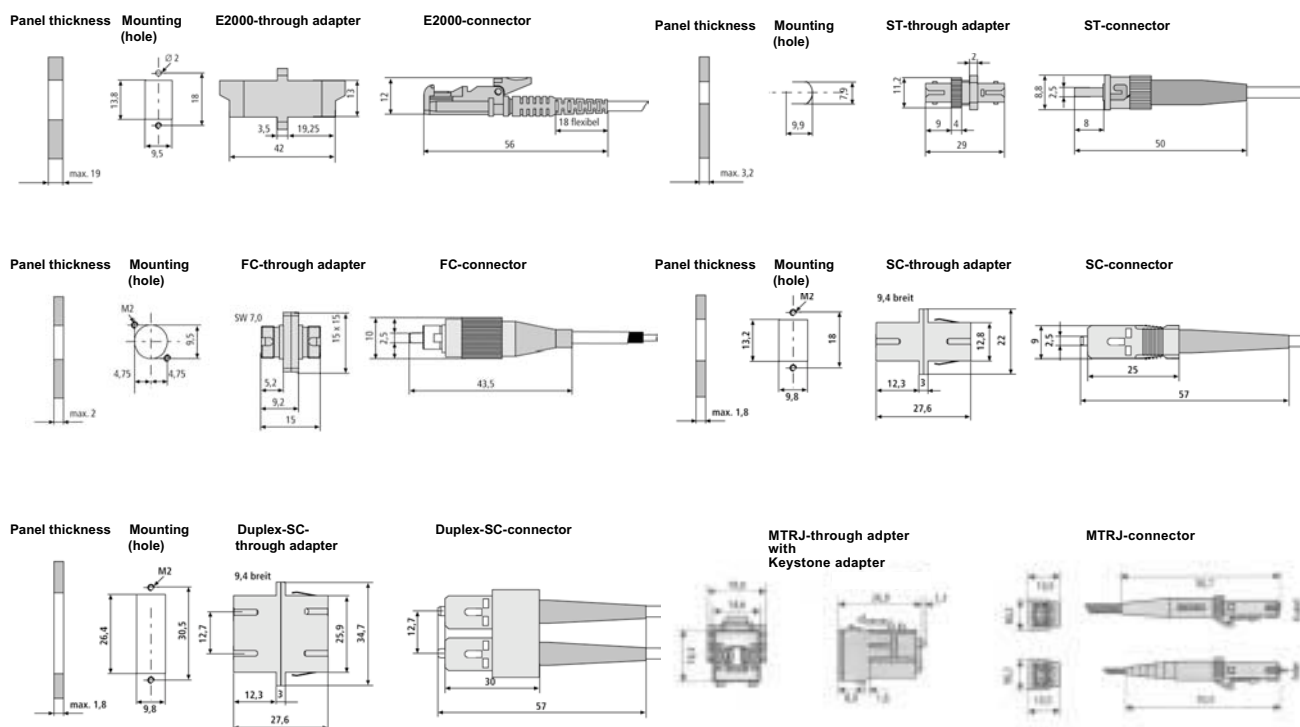


Order No.	FO Through adapter MTRJ	Pack
7023 1 030-00	FO Through adapter MTRJ with Keystone-Adapter, grey	1 pc

FO through-adapter for MTRJ connectors. Adapter housing made of plastic with Composite sleeve. Can be fitted in a housing wall with holes for RJ45 outlets (with the Keystone-Adapter).



**Dimensions in mm**





## FO Patch Cords

## How to Order, Technical Data

7006



## Cable type:

- 1 SM 9 µm
- 2 MM 50 µm
- 3 MM 62.5 µm
- 4 SM 9 µm / -20 to 80°C
- 5 SM 9 µm / -40 to 85°C

## Cable:

- 1 Fiber 0.9 mm
- 2 Cable 3 mm
- 3 Cable 2.4 mm
- 5 Duplex cable 2 x 3 mm
- 6 Cable 1.8 mm
- 7 Cable 2 x 1.8 mm

## Connectors 1 and 2:

- 1 SC
- 2 FC
- 3 DIN
- 4 E2000
- 5 ST
- 6 KRONE SC
- 7 Duplex SC
- 8 LC
- 0 no 2nd Connector (Pigtail)

## Polishing:

- 1 PC
- 2 SPC
- 3 APC 8°
- 4 APC 9°
- 5 UPC

## Length:

- 1 1 m
- 2 2 m
- 3 3 m
- 4 4 m
- 5 5 m
- 6 8 m
- 7 10 m
- 8 15 m
- 9 20 m

**Example :** FO Patch cable, duplex, 2 x 3 mm  
 FC-PC connector and  
 SC-PC connector with  
 2 m length => **7006 1 521 12**

## Technical Data

Connector	ST™	FC	SC	E 2000
Housing:	Zinc diecasting (Ni galvanized)	Brass (Ni plated)	Plastic	Plastic
Ferrule:	Zirconia ceramic	Zirconia ceramic	Zirconia ceramic	Zirconia ceramic
Insertion loss:	< 0.5 dB	< 0.5 dB	< 0.5 dB	< 0.5 dB
Return loss:	not specified for MM			
PC-polishing	—	> 27 dB	> 27 dB	—
SPC-polishing	—	> 40 dB	> 40 dB	> 40 dB
APC-polishing	—	> 60 dB	> 60 dB	> 60 dB
Operating temperature:	-25...+70 °C			
Tensile strength:	100 N for cable	100 N for cable	70 N for cable	100 N for cable
Durability :	500	1000	1000	1000
Standard application:	MM	SM	SM	SM

Through adapter type	ST™	FC	SC	E 2000
Housing	Zinc diecasting (Ni galvanized)	Brass (Ni plated)	Plastic	Plastic
Sleeve	Ceramics	Plastic	Phosphor bronze	Ceramics
Insertion loss				
Master/master	—	< 0.1 dB	< 0.1 dB	—
Offset of the inner diameter of the sleeve:	< 5 µm	< 5 µm	< 5 µm	—
Sleeve diameter	2,499 mm ± 0.5 µm	2,499 mm ± 0.5 µm	2,499 mm ± 0.5 µm	2,499 mm ± 0.5 µm
Operating temperature:	-40...+85 °C	-25...+70 °C	-40...+85 °C	-25...+70 °C
Durability	1000	500	1000	1000
Standard application	MM	MM	SM	SM



## FOPatch cords, Pigtails

Order No.	FO Pigtails, SM	Pack
7006 1 140-22	<b>FO Pigtail, E2000</b> SM-Fiber 9.0/125µm, 2 m, SPC-polishing, buffered fiber 0.9 mm	1 pc
7006 1 120-22	<b>FO Pigtail, FC</b> SM-Fiber 9.0/125µm, 2 m, SPC-polishing, buffered fiber 0.9 mm	1 pc
7006 1 110-22	<b>FO Pigtail, SC</b> SM-Fiber 9.0/125µm, 2 m, SPC-polishing, buffered fiber 0.9 mm	1 pc

Order No.	FO Pigtails, MM	Pack
7006 2 120-12	<b>FO Pigtail, FC</b> MM-Fiber 50/125µm, 2 m, PC-polishing, buffered fiber 0.9 mm	1 pc
7006 2 150-12	<b>FO Pigtail, ST</b> MM-Fiber 50/125µm, 2 m, PC-polishing, buffered fiber 0.9 mm	1 pc
7006 2 110-12	<b>FO Pigtail, SC</b> MM-Fiber 50/125µm, 2 m, PC-polishing, buffered fiber 0.9 mm	1 pc

Order No.	FO Patch cables, SM	Pack
7006 1 244-22	<b>FO Patch cable, E2000-E2000</b> SM-Fiber 9.0/125mm, 2 m, SPC-polishing, cable 3 mm	1 pc
7006 1 222-22	<b>FO Patch cable, FC/SPC-FC/SPC</b> SM-Fiber 9.0/125mm, 2 m, SPC-polishing, cable 3 mm	1 pc
7006 1 211-22	<b>FO Patch cable, SC/SPC-SC/SPC</b> SM-Fiber 9.0/125mm, 2 m, SPC-polishing, cable 3 mm	1 pc

Order No.	FO Patch cables duplex, MM	Pack
7006 2 522-12	<b>FO Patch cable, FC-FC</b> MM-Fiber 50/125mm, 2 m, PC-polishing, duplex cable 3mm	1 pc
7006 2 555-12	<b>FO Patch cable, ST-ST</b> MM-Fiber 50/125mm, 2 m, PC-polishing, duplex cable 3mm	1 pc
7006 2 577-12	<b>FO Patch cable, SC-SC</b> MM-Fiber 50/125mm, 2 m, PC-polishing, duplex cable 3mm	1 pc
7006 2 552-12	<b>FO Patch cable, ST-FC</b> MM-Fiber 50/125mm, 2 m, PC-polishing, duplex cable 3mm	1 pc
7006 2 557-12	<b>FO Patch cable, ST-SC</b> MM-Fiber 50/125mm, 2 m, PC-polishing, duplex cable 3 mm	1 pc

Further types and lengths on request.







# FO Splice Cassettes

## FAME, FO splice module

Order No.	FO splice module FAME	Pack
6769 2 261-00	FO splice module FAME S6	1 pc
6769 2 265-00	FO cover for FAME S6	1 pc

Single-fiber management system for terminating twelve fibers (6x2 pairs). Six subscriber cassettes are arranged in the splice module, in two blocks of three cassettes each vertically arranged in the splice module. Each cassette can accommodate two splices with scrimp splice protectors. They can be opened individually, thus permitting individual assembly of two fiber pairs without touching the other fiber bundles. Fibers which have not been cut or are not in use can also be stored. The splice module can be fixed through a hole in the centre of the module. Several splice modules can be stacked. A cover for the (top) splice module can also be ordered separately.



Order No.	FO splice module FAME	Pack
6769 2 260-00	FO splice module FAME S4	1 pc

Single-fiber management system for terminating eight fibers (4x2 pairs). Four subscriber cassettes are vertically arranged in the splice module. Each cassette can accommodate two splices with scrimp splice protectors. They can be opened individually, thus permitting individual assembly of two fiber pairs without touching the other fiber bundles. Fibers which have not been cut or are not in use can also be stored. The splice module can be fixed by inserting the screw supplied through a hole in the centre of the module.



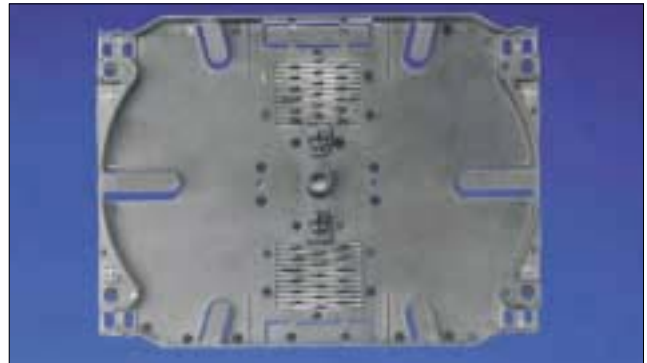
Order No.	FO splice cassette	Pack
6619 2 076-00	FO splice cassette	1 pc
6800 2 027-00	FO cover for splice cassette	1 pc

Splice cassette for accommodating splices and fiber reserve lengths. The cassette can be fixed through a hole in the centre of the cassette. Dimensions: 142 x 92 x 8mm



Order No.	FO splice cassette	Pack
6769 2 333-00	FO splice cassette UK24	1 pc
6769 3 333-00	FO cover for UK24 splice cassette	1 pc

Splice cassette for accommodating splices and fiber reserve lengths. The cassette can be fixed through a hole in the centre of the cassette. The dimensions of the splice cassette guarantee a minimum bending radius of 40mm for the fibers fitted. The UK24 splice cassette comes with two integrated crimp splice holders, each designed to accommodate 12 crimp splice protectors. Other types of splice holders can also be attached. Several cassettes can be stacked. A cover for the (top) cassette can also be ordered separately.



Distribution cabinets see chapter 16.



## FO Splice protectors, Splice holders

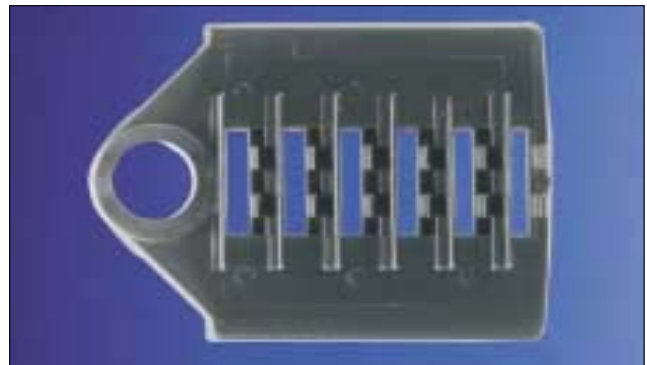
Order No.	FO splice protector (cement)	Pack
6800 2 033-03	FO splice protector (cement)	30 pcs
6800 2 033-10		100 pcs

Splice protector sleeve for thermal splices. Polymer shrinking tube and inner steel pin. Dimensions (l x Ø) in mm: 50 x 3.



Order No.	FO splice holder (cement)	Pack
6800 2 034-05	FO splice holder (cement)	10 pcs

Splice holder designed for use in OPAL, UK24 and KRONE splice cassettes, capable of accommodating up to 6 splices with cement splice protectors. Dimensions (l x w x h) in mm: 36 x 26 x 5.



Order No.	FO splice protector (crimp)	Pack
6800 2 035-03	FO splice protector (crimp)	30 pcs
6800 2 035-15		100 pcs

Splice protector for thermal splices. The V-shaped, corrosion-resistant metal support is coated on both sides with a permanently elastic coating which substitutes the primary coating of the fibers. Dimensions (l x w x h) in mm: 30 x 1.1 x 3.2



Order No.	FO splice holder (crimp)	Pack
6800 2 036-05	FO splice holder (crimp)	5 pcs

Splice holder designed for use in OPAL and KRONE splice cassettes, capable of accommodating up to 12 splices with crimp splice protectors. Dimensions (l x w x h) in mm: 34 x 40 x 4.





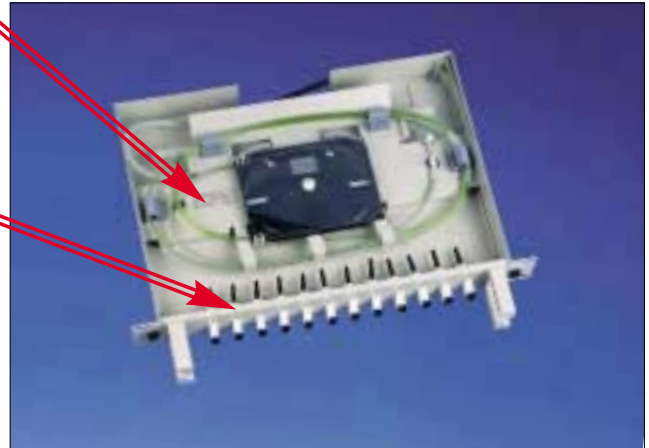
# 19" Splice Trays

## FO19" Splice trays

Order No.	19" Splice tray	Pack
6977 1 100-00	FO 19" Splice tray	1 pc

Splice tray with cover and without front panel.  
Fiber guides, Spiral tube, cable ties, Adjustable splice cassette holder with knurled nut, 1 or 2 KRONE splice cassettes, including splice holder (crimp), cover, Fixing materials for 19" installation, Assembly instructions

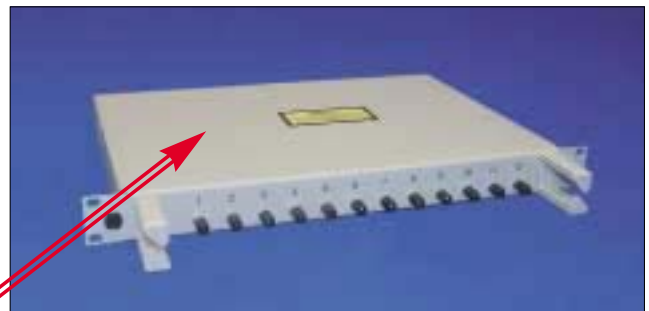
Order No.	Front panel for 19" Splice tray	Pack
6977 1 103-11	FO 19" Front panel 12xST	1 pc
6977 1 103-21	FO 19" Front panel 24xST	1 pc
6977 1 103-12	FO 19" Front panel 12xDIN	1 pc
6977 1 103-22	FO19" Front panel 24xDIN	1 pc
6977 1 103-13	FO19" Front panel 12xFC1 pc	
6977 1 103-23	FO19" Front panel 24xFC1 pc	
6977 1 103-14	FO19" Front panel 12xSC/E2000	1 pc
6977 1 103-24	FO19" Front panel 24xSC/E2000	1 pc



Order No.	19" Splice tray 24	Pack
6829 1 121-00	FO 19" Splice tray-24-24xSC	1 pc
6829 1 121-01	FO 19" Splice tray-24-12xSC	1 pc
6829 1 121-10	FO 19" Splice tray-24-12xSCD, duplex	1 pc
6829 1 122-00	FO 19" Splice tray-24-24xST	1 pc
6829 1 122-01	FO 19" Splice tray-24-12xST	1 pc
6829 1 123-00	FO 19" Splice tray-24-24xFC	1 pc
6829 1 123-01	FO 19" Splice tray-24-12xFC	1 pc

Splice tray with sliding box. (without through-adapters)

6829 2 065-00	FO 19" Splice tray-24-cover	1 pc
---------------	-----------------------------	------



Order No.	19" Splice box 24	Pack
6829 1 200-00	FO 19" Splice box-24-24xSC	1 pc
6829 1 200-01	FO19" Splice box-24-12xSC	1 pc
6829 1 201-10	FO19" Splice box-24-12xSCD	1 pc
6829 1 201-00	FO19" Splice box-24-24xST	1 pc
6829 1 201-01	FO19" Splice box-12xST1 pc	
6829 1 202-00	FO19" Splice box-24-24xFC	1 pc
6829 1 202-01	FO19" Splice box-24-12xFC	1 pc

19" Splice box prepared for FOThrough adapters.

6829 2 066-00	FO19" Splice box-24-cover	1 pc
---------------	---------------------------	------



Order No.	19"-K-Splice tray	Pack
7033 1 076-xx	FO 19"-K-Splice tray MT-RJ	1 pc
7033 1 078-xx	FO 19"-K-Splice tray SC	1 pc
7033 1 082-xx	FO 19"-K-Splice tray ST	1 pc
7033 1 080-yy	FO19"-K-Splice tray SCD	1 pc

Order help: xx=04 for 4x, xx=08 for 8x, xx=12 for 12x,  
xx=16 for 16x, xx=24 for 24x

with SC-duplex: yy=04 for 2x, yy=08 for 4x, yy=12 for 6x,  
yy=16 for 8x, yy=24 for 12x

19" FO Patch panel made of PC/ABS with integrated Fiber Management system and prepunched discharge openings for the introduction of multifiber buffer tubes or break-out cables. Conceived for standard wirings and for "blown fiber" -systems.

7033 2 018-00	FO-Splice holder (for 19"-K-Tray)	1 pc
---------------	-----------------------------------	------



**Other FO distribution solutions, boxes, see chapter 16.**