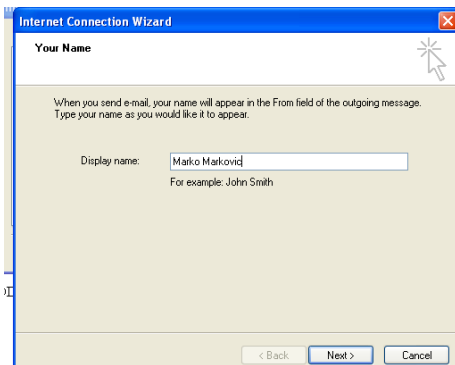


# Podešavanje e-mail pristupa na server tesla.rcub.bg.ac.rs

## Iz Outlook Express-a:

1. Sa padajućeg menija izaberete: Tools – Accounts...
2. U otvorenom prozoru: Add – Mail...
3. Upisujemo podatke i zatim **Next**



Internet Connection Wizard

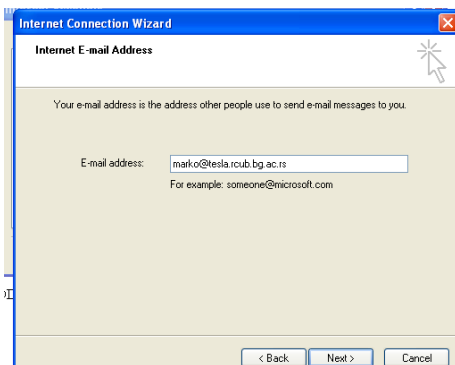
Your Name

When you send e-mail, your name will appear in the From field of the outgoing message. Type your name as you would like it to appear.

Display name: Marko Marković

For example: John Smith

< Back Next > Cancel



Internet Connection Wizard

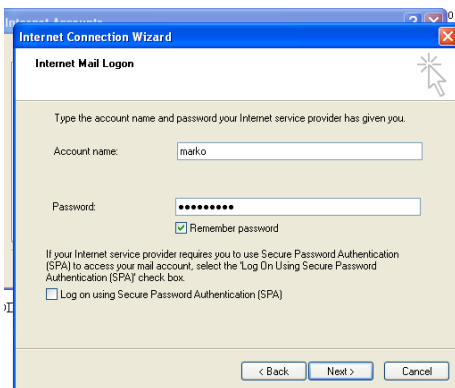
Internet E-mail Address

Your e-mail address is the address other people use to send e-mail messages to you.

E-mail address: marko@tesla.rcub.bg.ac.rs

For example: someone@microsoft.com

< Back Next > Cancel



Internet Connection Wizard

Internet Mail Logon

Type the account name and password your Internet service provider has given you.

Account name: marko

Password: ●●●●●●

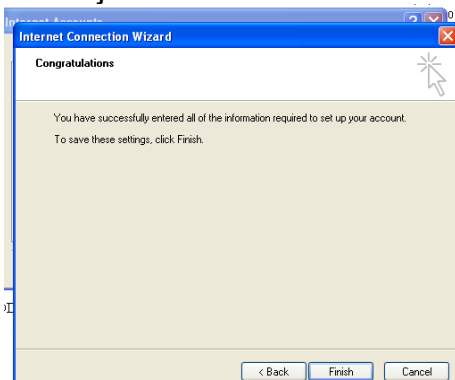
Remember password

If your Internet service provider requires you to use Secure Password Authentication (SPA) to access your mail account, select the "Log On Using Secure Password Authentication (SPA)" check box.

Log on using Secure Password Authentication (SPA)

< Back Next > Cancel

## Na kraju Finish



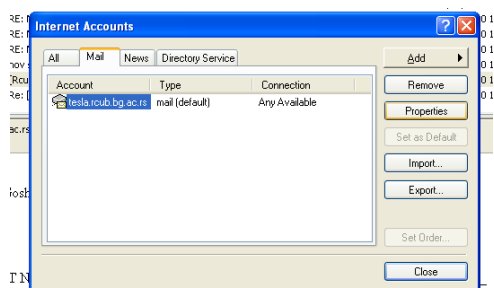
Internet Connection Wizard

Congratulations

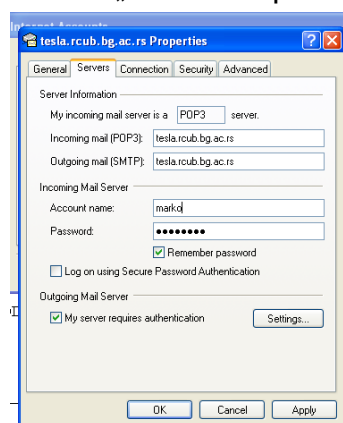
You have successfully entered all of the information required to set up your account. To save these settings, click Finish.

< Back Finish Cancel

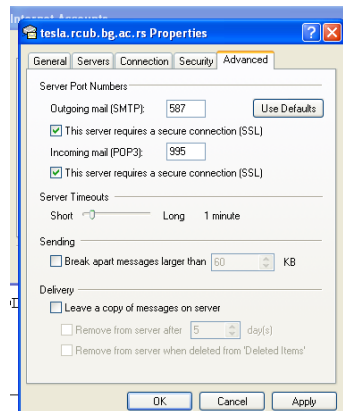
Potrebno je izvršiti podešavanja u novoformiranom „Mail account“-u:  
Klik na „Properties“



Klik na „Servers“ i podesiti ekran kao dole:



Klik na „Advanced“ i podesiti ekran kao dole:



Nakon toga klik na OK za spremanje promena.

Klik na Close za zatvaranje Account panela.

Vaš tesla.rcub.bg.ac.rs „account“ je spreman za primanje i slanje pošte.